

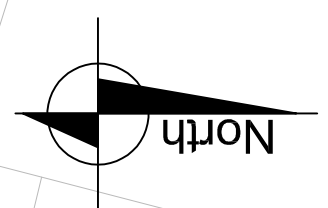
119 Court

1 to 19

117




115

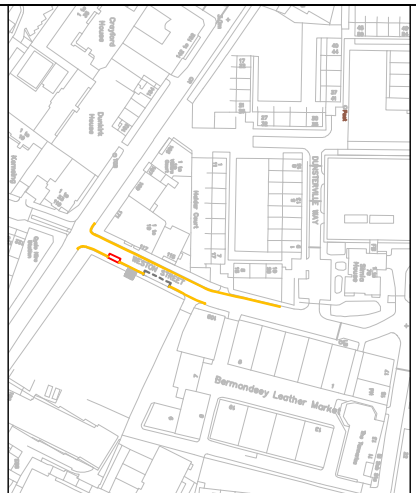
WESTON STREET



PROPOSAL - Remove 5.5m DYL and repalce with Car Club parking bay

New vehicle crossover for The Taper Building

- NOTES**
-  Proposed DYLS
 -  Existing permit holders parking
 -  Proposed Car Club bay



| REV | DATE | REVISION DESCRIPTION / DETAILS | DRN | CHKD | APPVD |
|-----|------|--------------------------------|-----|------|-------|
| | | | BY | BY | BY |
| | | | | | |
| | | | | | |
| | | | | | |
| | | | | | |
| | | | | | |
| | | | | | |
| | | | | | |
| | | | | | |
| | | | | | |
| | | | | | |



PROJECT
18/19 Q4B MTS
WESTON STREET

TITLE
MASTERPLAN

| STATUS | DESIGNED | CHECKED | APPROVED |
|-------------|----------|---------|----------|
| SCALE | DRAWN | TA | AS |
| 1:200 | LBSMS1 | AS | RM |
| DRAWING NO: | LBSMS1 | REV: | 1.0 |

DATE DRAWN: 4TH APRIL 2019 DATE ISSUED: 4TH APRIL 2019